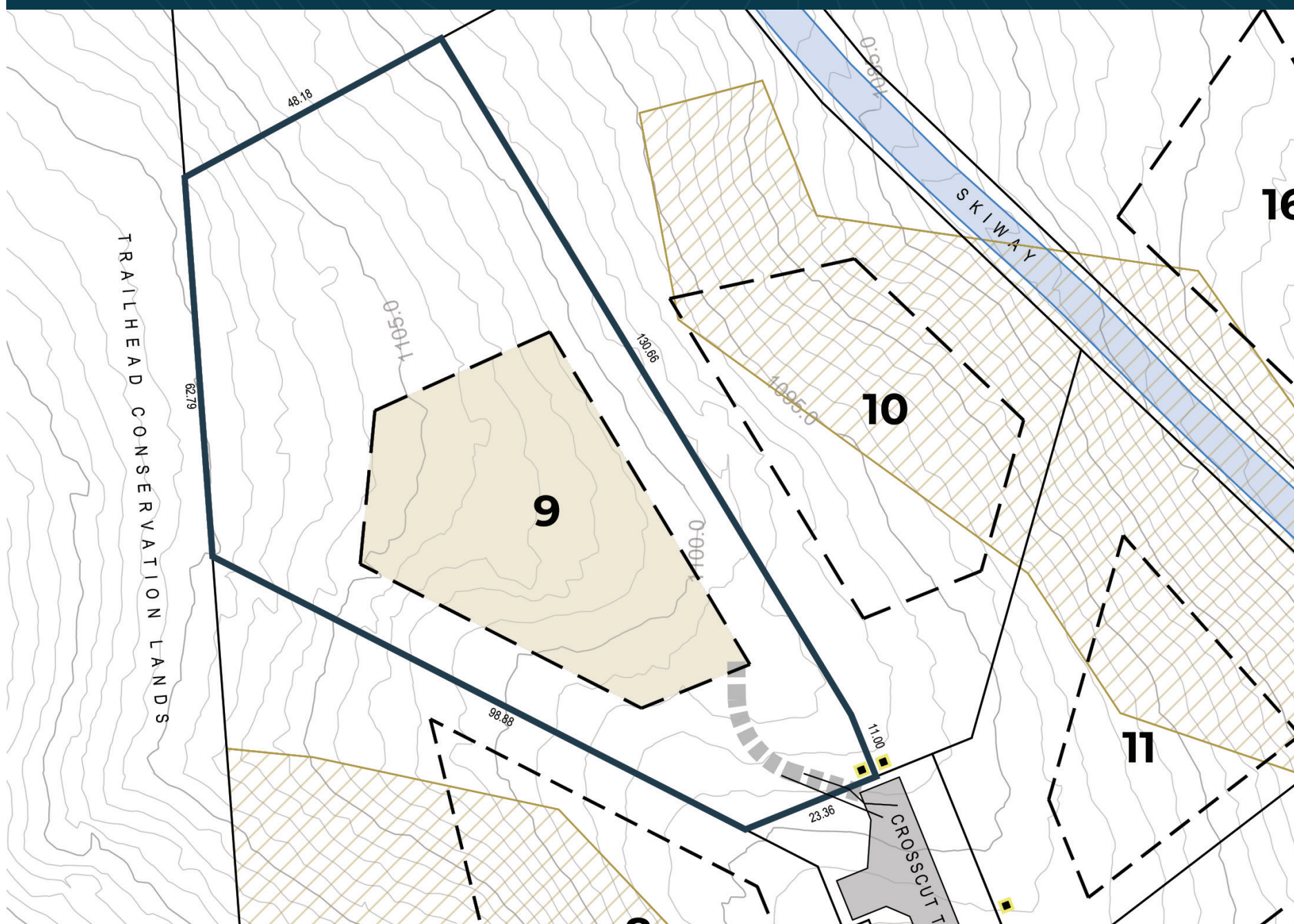


TRAILHEAD
HOMESITE 9

0.77 hectares · 7,741 m²
1.91 acres

Accessed via a long, private driveway, this secluded homesite has a gentle slope and the opportunity for a spacious meadow. Adjacent open space enhances privacy, while expansive views and outdoor flexibility support a retreat designed for gathering and quiet reflection.

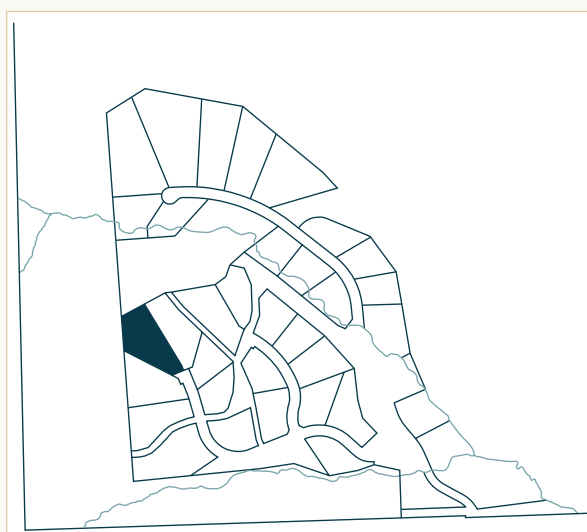


Property Boundary
Building Envelope

All dimensions in metres
Contour interval = 1.0 m

Required Driveway Location
Entry monument & light
Water service location
Sewer service location

Geohazard Zone II
Conditionally suitable for residential structures; site specific review required
Geohazard Zone IIIB
Unsuitable for residential structures

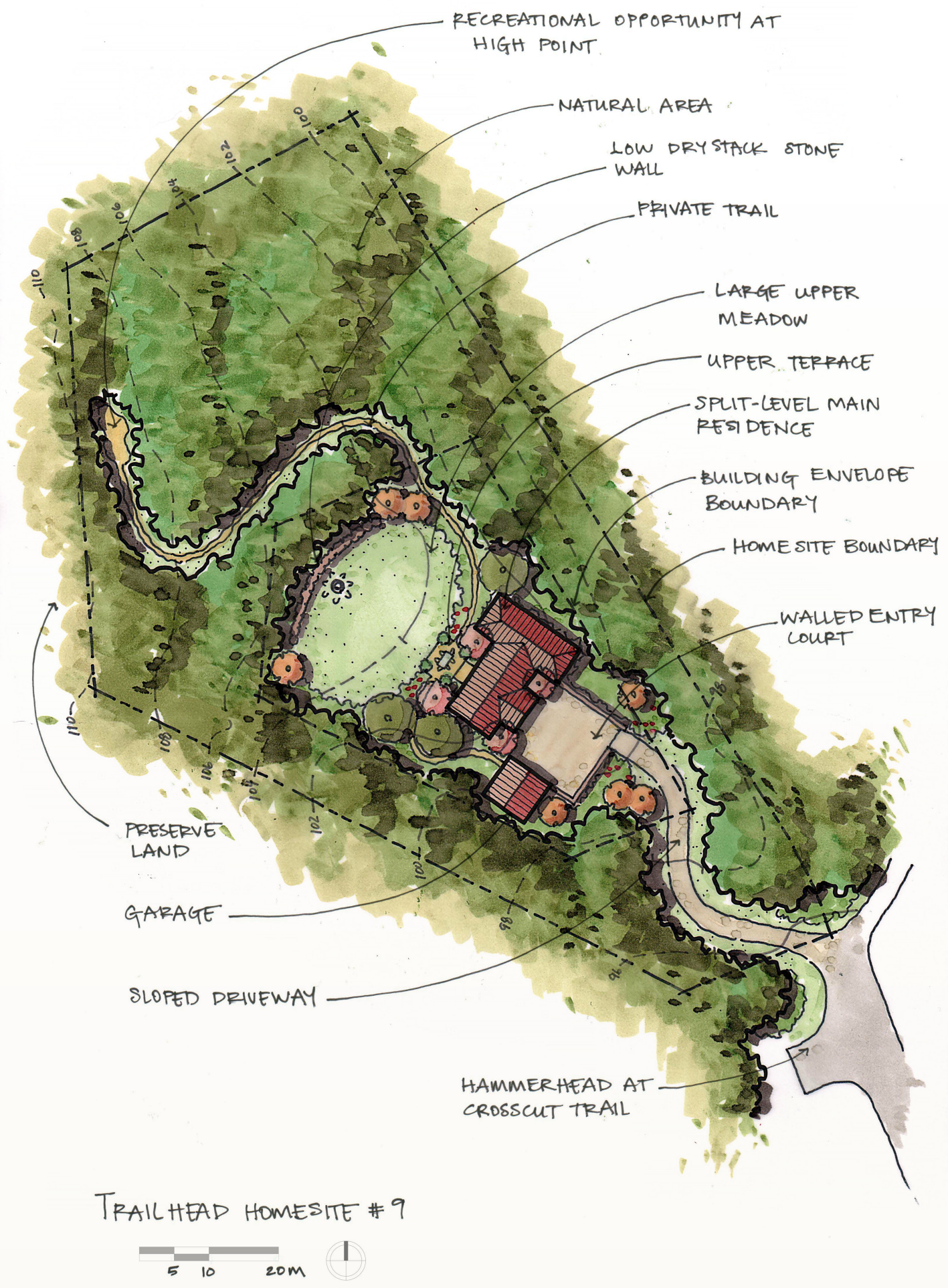


HOMESITE AREA 1.91 acres | 0.77 ha | 7,741 m²
BUILDING ENVELOPE 0.55 acres | 2,224 m²
HOMESITE FRONTAGE 23.3 m | 76.4 ft

SETBACKS

Front yard: 25.0 m | 82.0 ft
Rear yard: As per homesite plan
Side yard (left): 10.0 m | 32.8 ft
Side yard (right): 10.0 m | 32.8 ft





HOMESITE VIEWS

- Views of Lizard headwall from Polar Peak to Grizzly Peak
- Tree-filtered views north to Mount Fernie
- Tree-filtered views to Morrissey Ridge

NOTABLE SITE FEATURES

- Long driveway off end-of-road hammerhead to large, secluded homesite
- Close to Trailhead ski-way
- Gentle slope
- Opportunity for large back meadow
- Adjacent to open space

These homesite plan are provided for information purposes only and must not be construed as legal surveys. They have been prepared based on the most recent information available at the time and are believed to be true and accurate; however, no warranty as to accuracy is provided by the Developer. The homesite owner must confirm all dimensions, elevations, and other information provided herein. The Developer and its employees, contractors, consultants and agents are not liable for any losses arising from use of this plan. E&OE. See Trailhead's Residential Design Guidelines for requirements related to use of building envelope. Note that contour lines within road rights-of-way represent pre-development grades.

